

---

# Apparel & Footwear

---

## Label Printing - Label Matrix Application

---

Argentis Consulting

---



# **LABEL PRINTING**

The following steps describes the Label Printing process.

- Setup from SAP Business One
- Setup Database File for a QDF Label
- Setup a Printer for a QDF Label File
- Setup price list labels types in SAP B1
- Setup UCC128 packaging labels for a Business Partner

## **Setup from SAP Business One**

You have to setup the physical path location for:

Label Matrix Application

QDF and DBF files for price list labels

QDF and DBF files for packaging labels

Go to Apparel → Setup → Parameters:

Apparel And Footwear Setup

Item Master Data Document Settings Production Labeling Path Critical path Display Updatable UDF

Prefix

Item Pictures	C:\Program Files (x86)\SAP\SAP Business One\Attachments	...
Label Matrix Print Command		...
UCC 128 label file		...
Price List Labels		...
Crystal Report	C:\Program Files (x86)\SAP\SAP Business One Server\B1_SHR\Crystal	...

OK Cancel

## Setup Database File for a QDF Label

For price list labels, we are using a fixed database file, named upcjob01.dbf

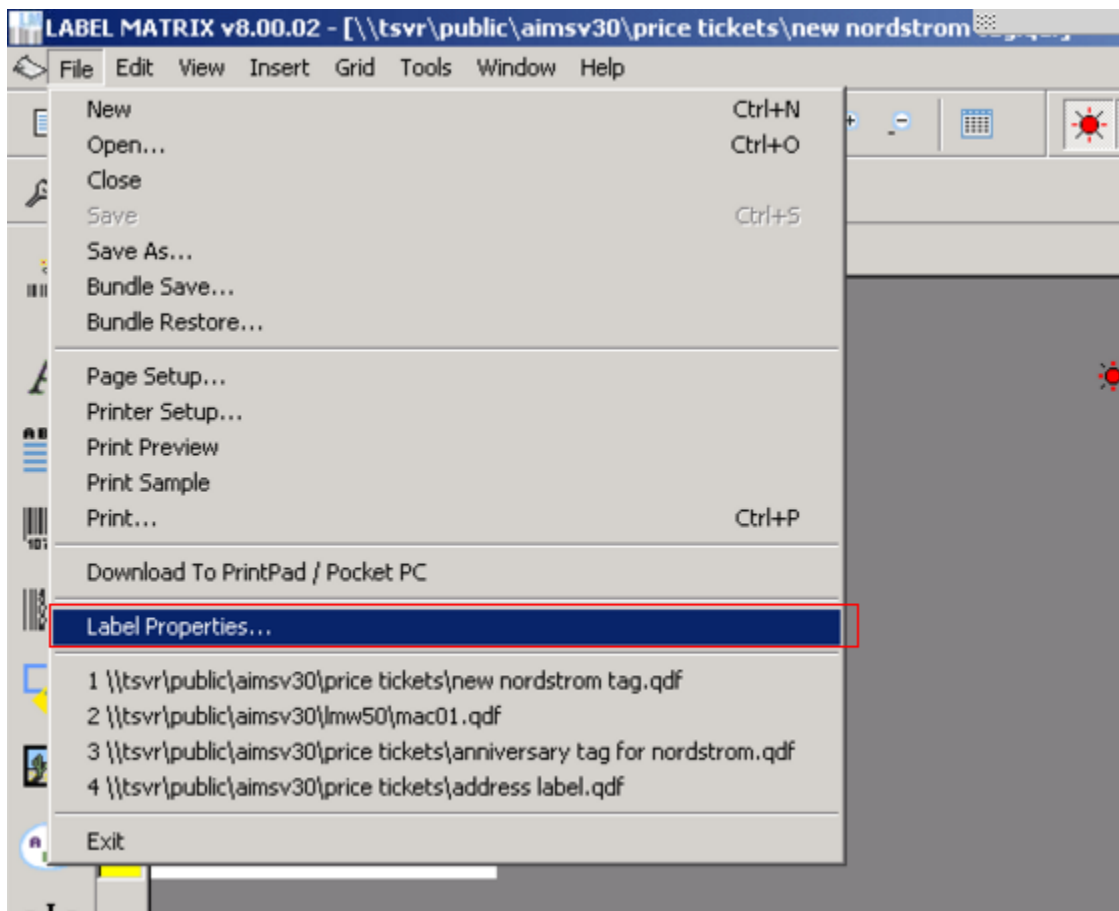
For UCC 128 packaging labels, the file is label128.dbf

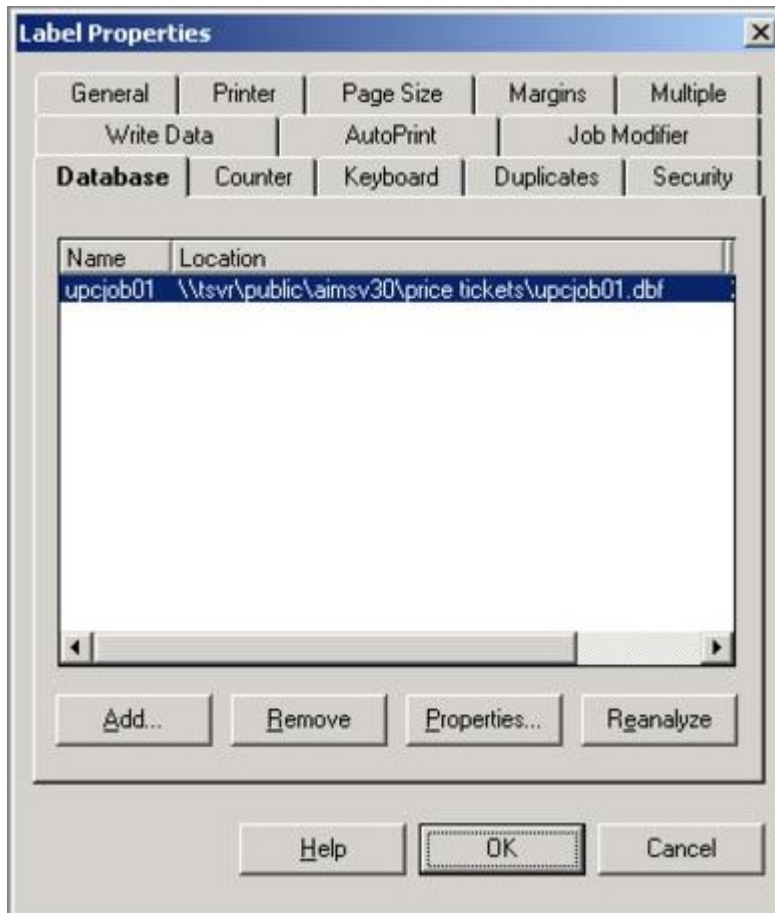
Apparel and Footwear will create the file in the location specified in step 1.

Then, the first time you are going to print a label, you have to setup in the label QDF file, from Label Matrix 8, the exactly path where the DBF Database File is located.

So, start Label Matrix, then browse and open the label QDF file.

Now, go to Label Properties, in the File Menu





Now you have to remove the old database file from the Database Tab, and then add the new database, located in the path specified in Apparel Setup Parameters.

To delete a database, click in the existing line to highlight it, and then press Remove. The system will require for confirmation.

Then, the list of databases will remain empty.

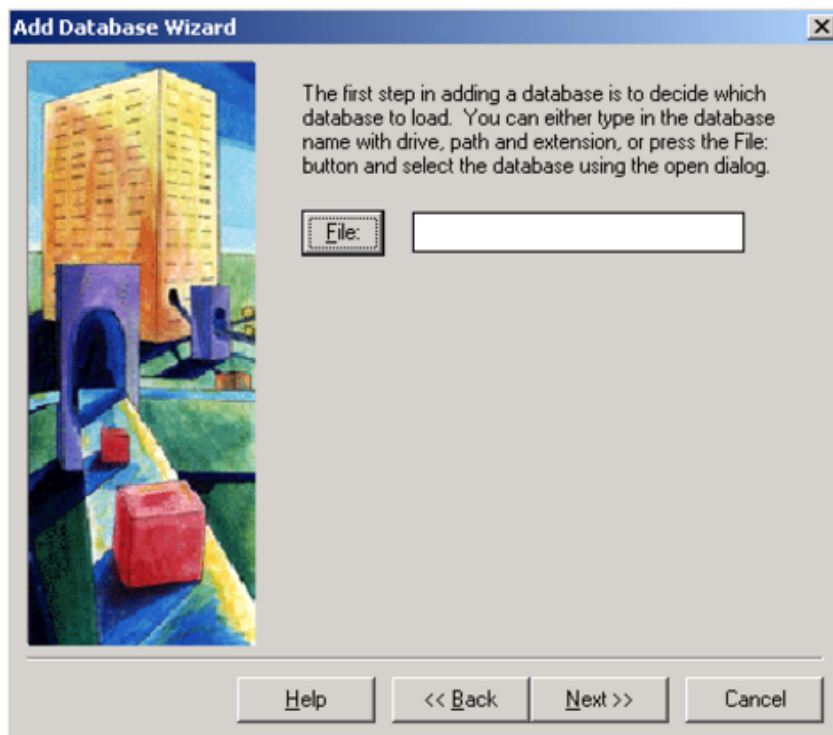
Now, click the Add button, for adding the database. The following screens show you how all the required steps:

In the first Wizard screen, select Normal Setup, and click *Next*.

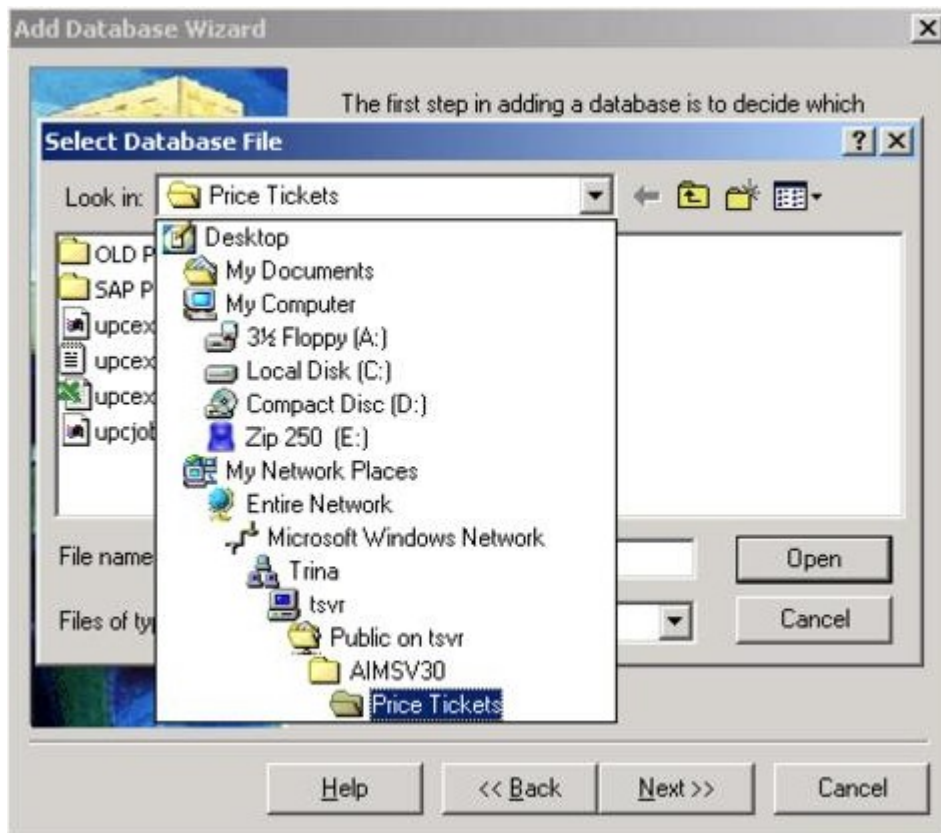


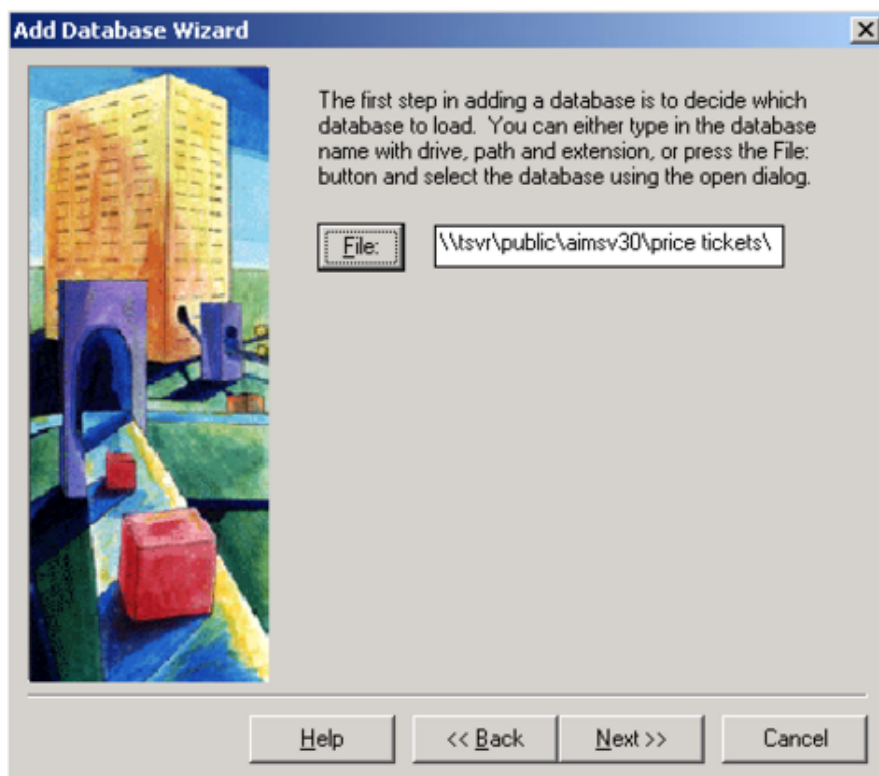
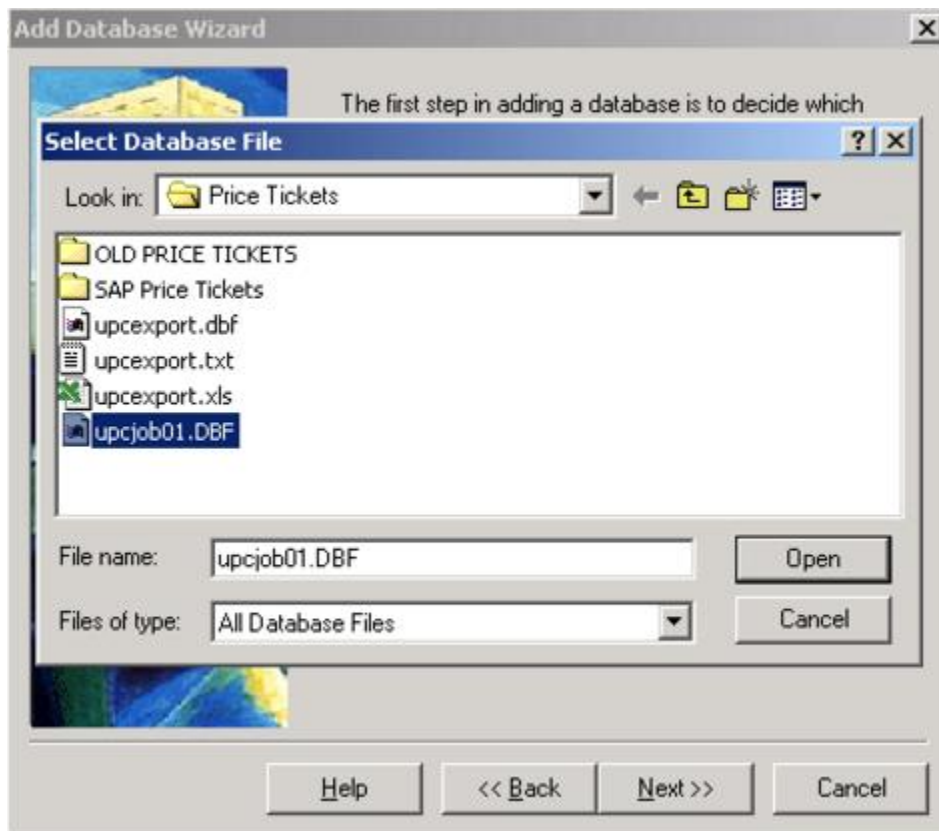
In step 2, you have to specify the DBF file.

Remember that the DBF must be located exactly in the same path you defined in Apparel and Footwear Parameters, in SAP.



So browse for the file: upcjob01.dfb for price list labels, or label128.dbf for ucc128 labels.





Click *Next*, and Label Matrix will load the file.



**Add Database Wizard**

Records Analyzed: 1

Below are a list of the fields that have been found in each record. You can change the sample value or the max length of any of the fields by selecting the field and pressing the Properties button.

Name	Sample	Type	Min	Max
labelqty	1	N	1	1
style	227140	N	6	6
color	BLK	U	3	3
size	6	N	1	1
upcnum	637870051544	N	12	12
upcn11	63787005154	N	11	11
sku			0	0
lot			0	0

Properties...

Help << Back Next >> Cancel

Select in the Next step Sequential access.

**Add Database Wizard**

How would you like to access the Database?

☒ Sequential access -- usually begins at the first record of the file and prints the records in succession.

☐ Keyed Access, Primary Key -- enables user to randomly access any record in the database based on the value of a primary "key."

☐ Keyed Access, Unlimited Keys - enables the user to randomly access any record in the database based on the values of several keys

☐ Ignore trailing spaces in Key field

Help << Back Next >> Cancel



Specify the Database Name as upcjob01 for price list labels, or label128 for ucc128 labels.

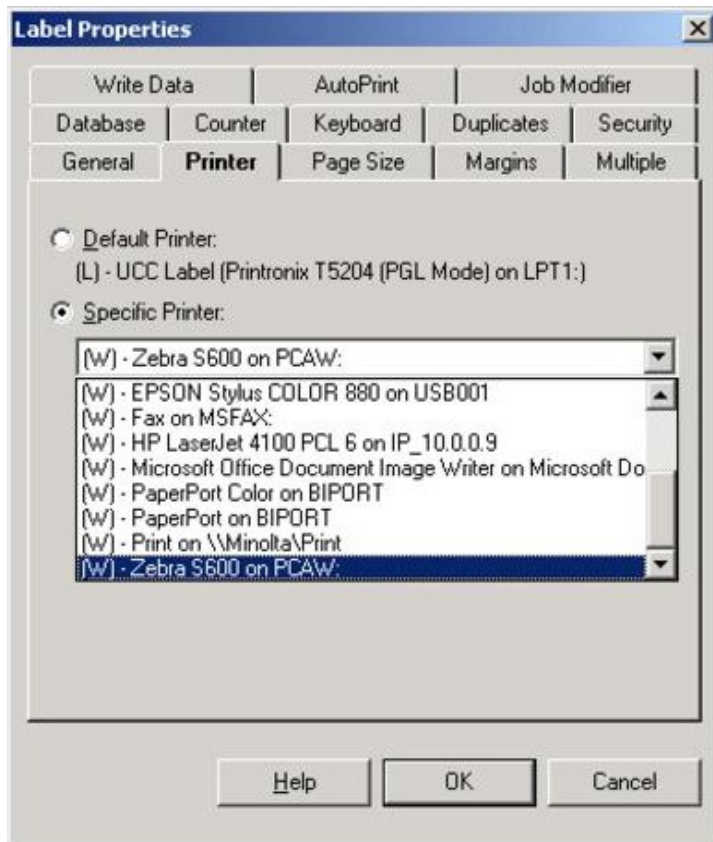


Setup a Printer for a QDF Label File

To select the printer for a Label, you have to open the QDF file form Label Matrix Application.

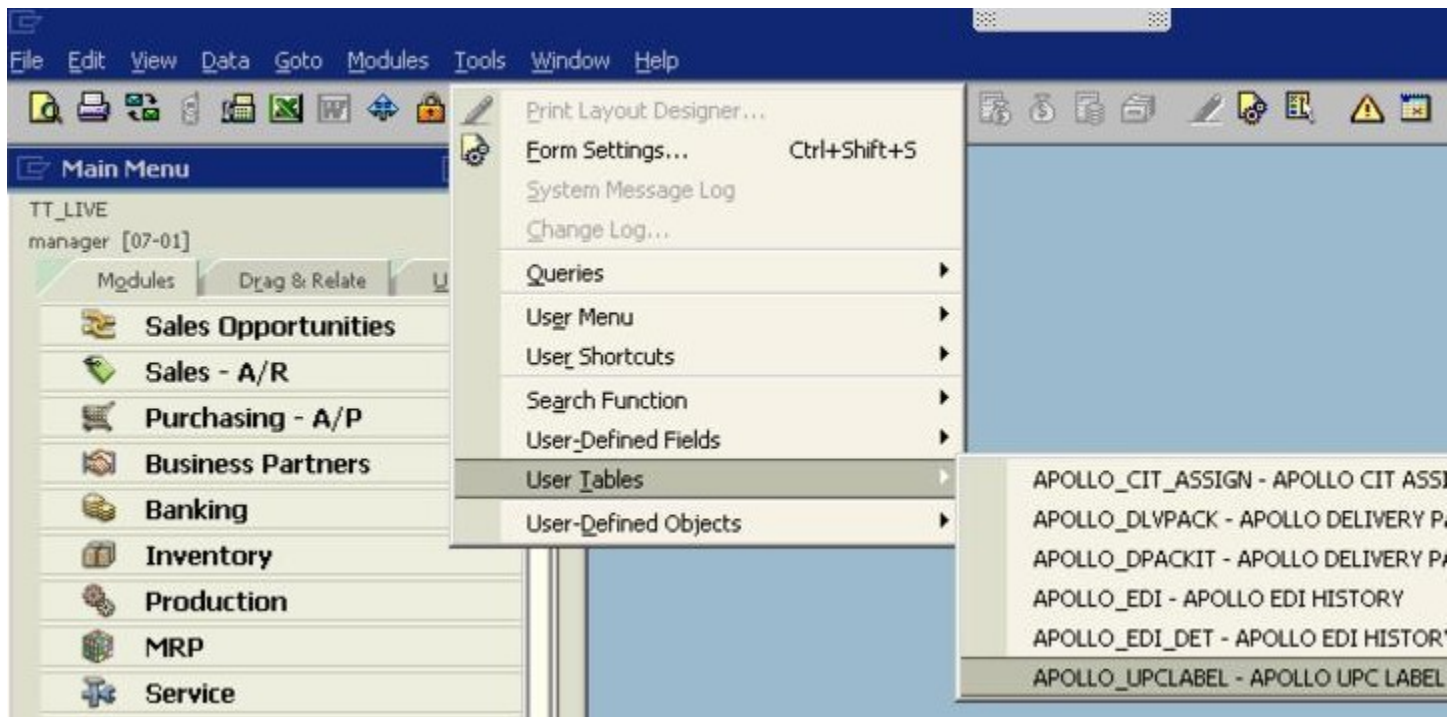
Then enter to the Label Properties, from File Menu.

Select the Printer Tab, and choose the desired printer from the Specific Printer combo, and then Save the file.



Setup price list labels types in SAP B1

To add, delete or update price list labels types in SAP Business One, go to:



APOLLO UPC LABEL TYPES			
#	Code	Name	File Name
1	1	Anniversary tag for Nordstrom	anniversary tag for nordstrom.qdf
2	10	Bags Nor sak Fed	Bags Nor sak Fed.qdf
3	11	Barcode sticker only	barcode sticker only.qdf
4	12	Berri pace	berri pace.qdf
5	13	Big parisian tag	bigtagparisiantag.qdf
6	2	Marshfields aims	marshfields aims.qdf
7	3	New Federated tag	New Federated tag.qdf
8	4	New Nordstrom Tag	New Nordstrom Tag.qdf
9	5	New Saks tag	New Saks tag.qdf
10	6	Nordstrom direct	nordstrom directqdf.qdf
11	7	Sticker tag	STICKERTAG.qdf
12	8	Tags for HandBags Nor sak fed	tags for HandBags Nor sak fed 2UP .qdf
13			

Here you must enter a numeric Code, a Name for the label, used to select the label in SAP, and finally the QDF File name, DO NOT ENTER THE PATH.

## Setup UCC128 packaging labels for a Business Partner

A UCC128 label is associated to a Business Partner, so each one of them have a UDF names Label File Name, in where you can set the QDF file name to be used when printing Packaging Labels.

Remember that the file you are setting here must be located on the path specified from Apparel Parameters Setup, in SAP B1

The screenshot shows the 'Business Partner Master Data' form in SAP, specifically the 'General' tab. The form is divided into several sections. The top section contains basic data fields: Code (CMACYS88), Name (MACY'S WEST), Foreign Name, Group (Customers), Currency (US Dollar), and Federal Tax ID. To the right of these are financial fields: Account Balance (0.00), Deliveries (0.00), Orders (0.00), and Opportunities. Below this is a tabbed interface with tabs for General, Contact Persons, Addresses, Payment Terms, Payment System, Accounting, Properties, and Remarks. The 'General' tab is active, showing fields for Tel 1, Tel 2, Mobile Phone, Fax, E-Mail, Web Site, Shipping Type, Password, Factoring Indicator, and Project. To the right of these are fields for Contact Person (ANDREA), ID No. 2, Remarks, Sales Employee (-No Sales Employee-), BP Channel Code, Technician, and Territory. At the bottom left are checkboxes for 'Active' and 'On Hold'. At the bottom right are buttons for 'Update', 'Cancel', 'Related Service Calls', 'Activity', and 'Related Activities'. On the far right, a partial view of another tab shows fields for Factor (CIT), Factor Account, and PO Address. A red box highlights the 'Label File Name' field in the 'Properties' tab.

Business Partner Master Data	
Code	CMACYS88
Name	MACY'S WEST
Foreign Name	
Group	Customers
Currency	US Dollar
Federal Tax ID	
Account Balance	0.00
Deliveries	0.00
Orders	0.00
Opportunities	

General	
Tel 1	
Tel 2	
Mobile Phone	
Fax	
E-Mail	
Web Site	
Shipping Type	
Password	
Factoring Indicator	
Project	
Contact Person	ANDREA
ID No. 2	
Remarks	
Sales Employee	-No Sales Employee-
BP Channel Code	
Technician	
Territory	

☐ Active  
☐ On Hold

Update Cancel Related Service Calls Activity Related Activities

Factor (CIT)  
Factor Account  
PO Address  
Label File Name



**Argentis Consulting** is dedicated to the development, distribution and support of recognized certified solutions for SAP Business One. As an SAP Software Service Provider Partner with Gold Status.

#### INFORMACIÓN DE CONTACTO



##### USA

9744 NW 45th Lane  
Doral, FL 33178  
[info@argentisconsulting.com](mailto:info@argentisconsulting.com)

##### CARIBEAN

644 Fernández Juncos Ave,  
San Juan, PR 00907,  
PUERTO RICO  
[caribe@argentisconsulting.com](mailto:caribe@argentisconsulting.com)

##### ARGENTINA

Ávila y Zarate 2048  
Cerro de la Rosas, Córdoba,  
CP 5009  
Córdoba - Argentina  
[info@argentisconsulting.com](mailto:info@argentisconsulting.com)

##### SPAIN

C/ Juan Bravo N° 3  
A 28006  
Phone: (+34) 91 123 7263  
Madrid - Spain  
[info@argentisconsulting.com](mailto:info@argentisconsulting.com)

